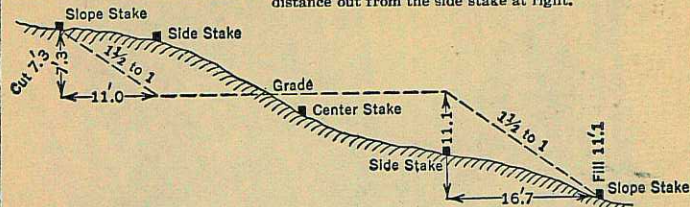


1950-18

74

**DISTANCES FROM SIDE STAKES FOR CROSS-SECTIONING**  
**Roadway of any Width. Side Slopes 1 1/2 to 1.**

In the figure below: opposite 7 under "Cut or Fill" and under .3 read 11.0, the distance out from the side stake at left. Also, opposite 11 under "Cut or Fill" and under .1 read 16.7, the distance out from the side stake at right.



Cut or Fill	Distance out from Side or Shoulder Stake										Cut or Fill
	0	.1	.2	.3	.4	.5	.6	.7	.8	.9	
0	0.0	0.2	0.3	0.5	0.6	0.8	0.9	1.1	1.2	1.4	0
1	1.5	1.7	1.8	2.0	2.1	2.3	2.4	2.6	2.7	2.9	1
2	3.0	3.2	3.3	3.5	3.6	3.8	3.9	4.1	4.2	4.4	2
3	4.5	4.7	4.8	5.0	5.1	5.3	5.4	5.6	5.7	5.9	3
4	6.0	6.2	6.3	6.5	6.6	6.8	6.9	7.1	7.2	7.4	4
5	7.5	7.7	7.8	8.0	8.1	8.3	8.4	8.6	8.7	8.9	5
6	9.0	9.2	9.3	9.5	9.6	9.8	9.9	10.1	10.2	10.4	6
7	10.5	10.7	10.8	11.0	11.1	11.3	11.4	11.6	11.7	11.9	7
8	12.0	12.2	12.3	12.5	12.6	12.8	12.9	13.1	13.2	13.4	8
9	13.5	13.7	13.8	14.0	14.1	14.3	14.4	14.6	14.7	14.9	9
10	15.0	15.2	15.3	15.5	15.6	15.8	15.9	16.1	16.2	16.4	10
11	16.5	16.7	16.8	17.0	17.1	17.3	17.4	17.6	17.7	17.9	11
12	18.0	18.2	18.3	18.5	18.6	18.8	18.9	19.1	19.2	19.4	12
13	19.5	19.7	19.8	20.0	20.1	20.3	20.4	20.6	20.7	20.9	13
14	21.0	21.2	21.3	21.5	21.6	21.8	21.9	22.1	22.2	22.4	14
15	22.5	22.7	22.8	23.0	23.1	23.3	23.4	23.6	23.7	23.9	15
16	24.0	24.2	24.3	24.5	24.6	24.8	24.9	25.1	25.2	25.4	16
17	25.5	25.7	25.8	26.0	26.1	26.3	26.4	26.6	26.7	26.9	17
18	27.0	27.2	27.3	27.5	27.6	27.8	27.9	28.1	28.2	28.4	18
19	28.5	28.7	28.8	29.0	29.1	29.3	29.4	29.6	29.7	29.9	19
20	30.0	30.2	30.3	30.5	30.6	30.8	30.9	31.1	31.2	31.4	20
21	31.5	31.7	31.8	32.0	32.1	32.3	32.4	32.6	32.7	32.9	21
22	33.0	33.2	33.3	33.5	33.6	33.8	33.9	34.1	34.2	34.4	22
23	34.5	34.7	34.8	35.0	35.1	35.3	35.4	35.6	35.7	35.9	23
24	36.0	36.2	36.3	36.5	36.6	36.8	36.9	37.1	37.2	37.4	24
25	37.5	37.7	37.8	38.0	38.1	38.3	38.4	38.6	38.7	38.9	25
26	39.0	39.2	39.3	39.5	39.6	39.8	39.9	40.1	40.2	40.4	26
27	40.5	40.7	40.8	41.0	41.1	41.3	41.4	41.6	41.7	41.9	27
28	42.0	42.2	42.3	42.5	42.6	42.8	42.9	43.1	43.2	43.4	28
29	43.5	43.7	43.8	44.0	44.1	44.3	44.4	44.6	44.7	44.9	29
30	45.0	45.2	45.3	45.5	45.6	45.8	45.9	46.1	46.2	46.4	30
31	46.5	46.7	46.8	47.0	47.1	47.3	47.4	47.6	47.7	47.9	31
32	48.0	48.2	48.3	48.5	48.6	48.8	48.9	49.1	49.2	49.4	32
33	49.5	49.7	49.8	50.0	50.1	50.3	50.4	50.6	50.7	50.9	33
34	51.0	51.2	51.3	51.5	51.6	51.8	51.9	52.1	52.2	52.4	34
35	52.5	52.7	52.8	53.0	53.1	53.3	53.4	53.6	53.7	53.9	35
36	54.0	54.2	54.3	54.5	54.6	54.8	54.9	55.1	55.2	55.4	36
37	55.5	55.7	55.8	56.0	56.1	56.3	56.4	56.6	56.7	56.9	37
38	57.0	57.2	57.3	57.5	57.6	57.8	57.9	58.1	58.2	58.4	38
39	58.5	58.7	58.8	59.0	59.1	59.3	59.4	59.6	59.7	59.9	39
40	60.0	60.2	60.3	60.5	60.6	60.8	60.9	61.1	61.2	61.4	40

KEUFFEL & ESSER CO., N. Y.

For Curve Tables see end of book

1950 - IP  
 Providence  
 City  
 Return to  
 Eugene L. Shaw  
 Logan Utah

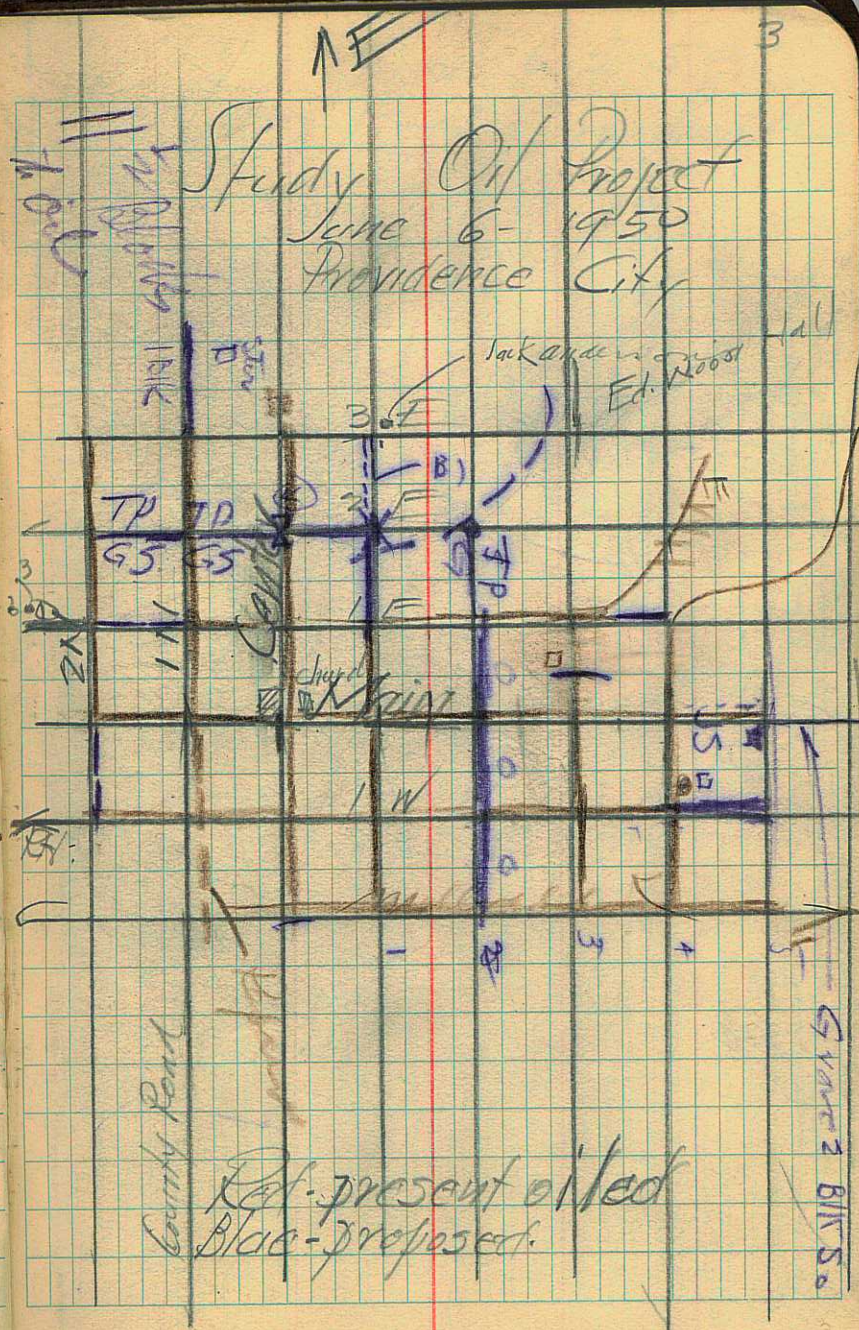
The paper in this book No. 360  
 is made of 100% high grade rag stock  
 with a WATER RESISTING surface sizing.

Wm Waines

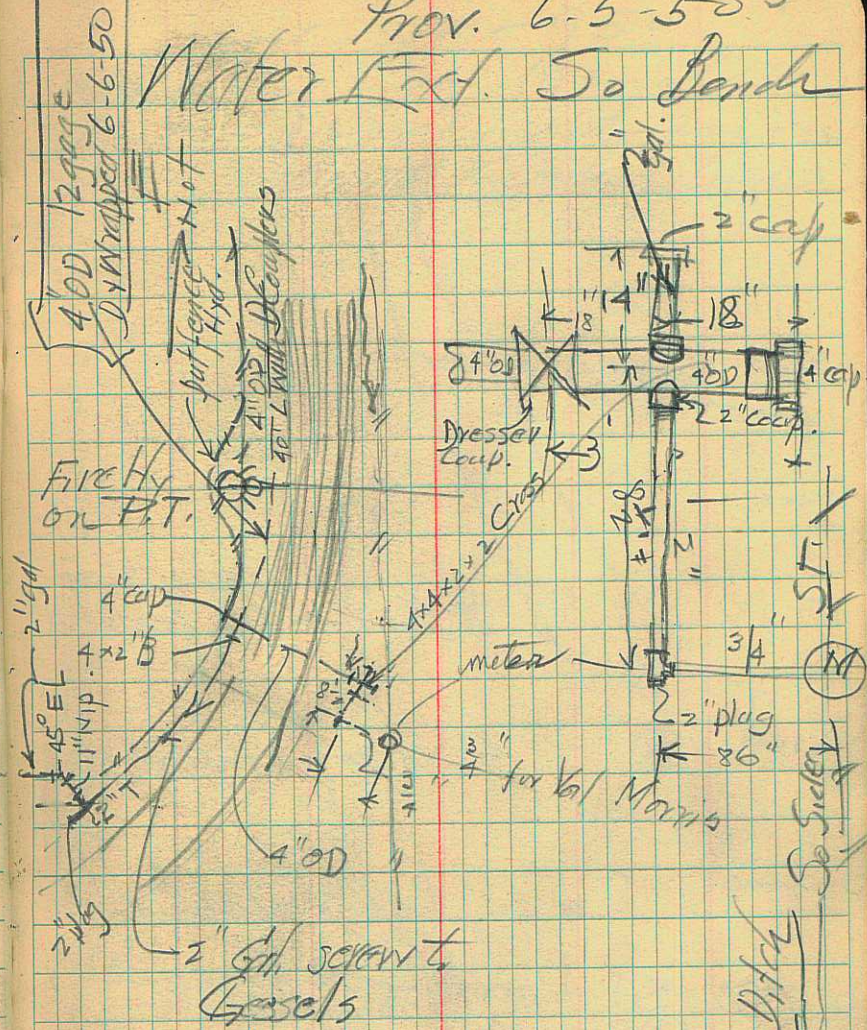
- IBK  
① Turnpike & G  
② move 2 poles W.  
Pop. on E side

G5 = good support  
TP = turn pike

- ④ 24' - full width  
15"



Prov. 6-5-505  
 Water Ext. 50 Bands



4+00 (see over)

3+00

2+95 to 4" ~~xxxxxx~~ the width  
to 4" fire tee from X

51 W  
2+64 S

4" valve for entry to W

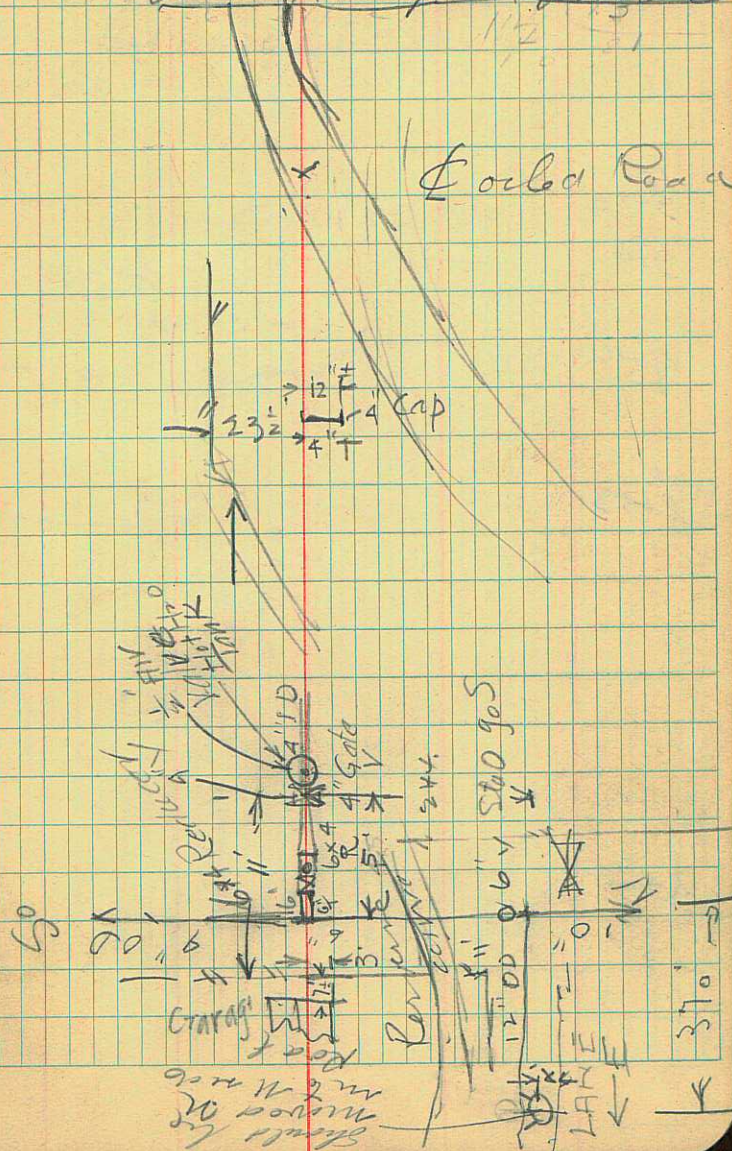
2+00 in line with S side of house on

0+93 S all line Revane curve  
a fence on W

0 S 17' to S line St. go E  
at C" valve

June 12 1950 7

Meas. of So. Bench  
water works extension  
Assist. Clyde A. Linder



16+02.5

15+48<sup>+</sup>

11<sup>+</sup>00

10  
9+80

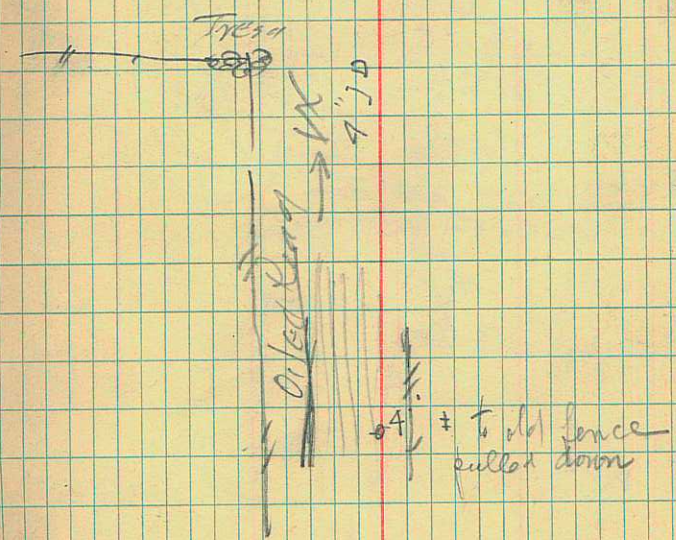
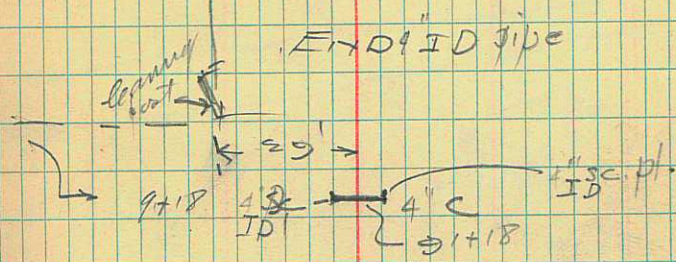
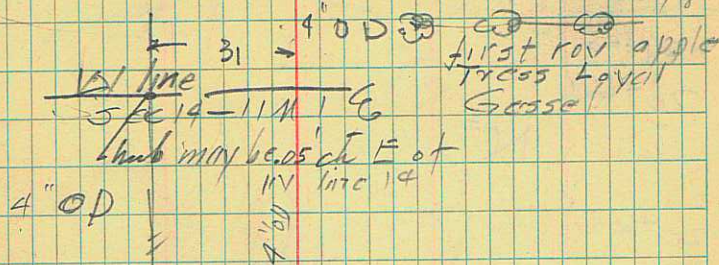
9+18

9+06.6

8+78<sup>±</sup>  
~~8+83~~

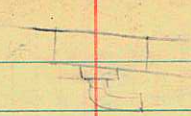
4+00

918 9  
883 918  
21 78



4<sup>±</sup> to old fence pulled down





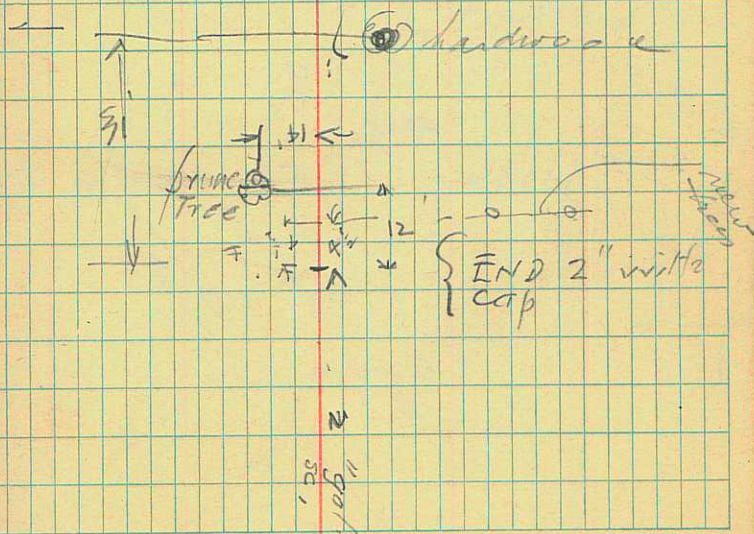
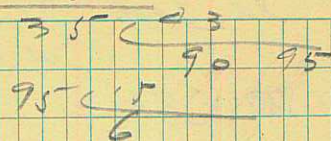
2 1/2 + 60.2 5+

2 3/4

2 2

170  
135

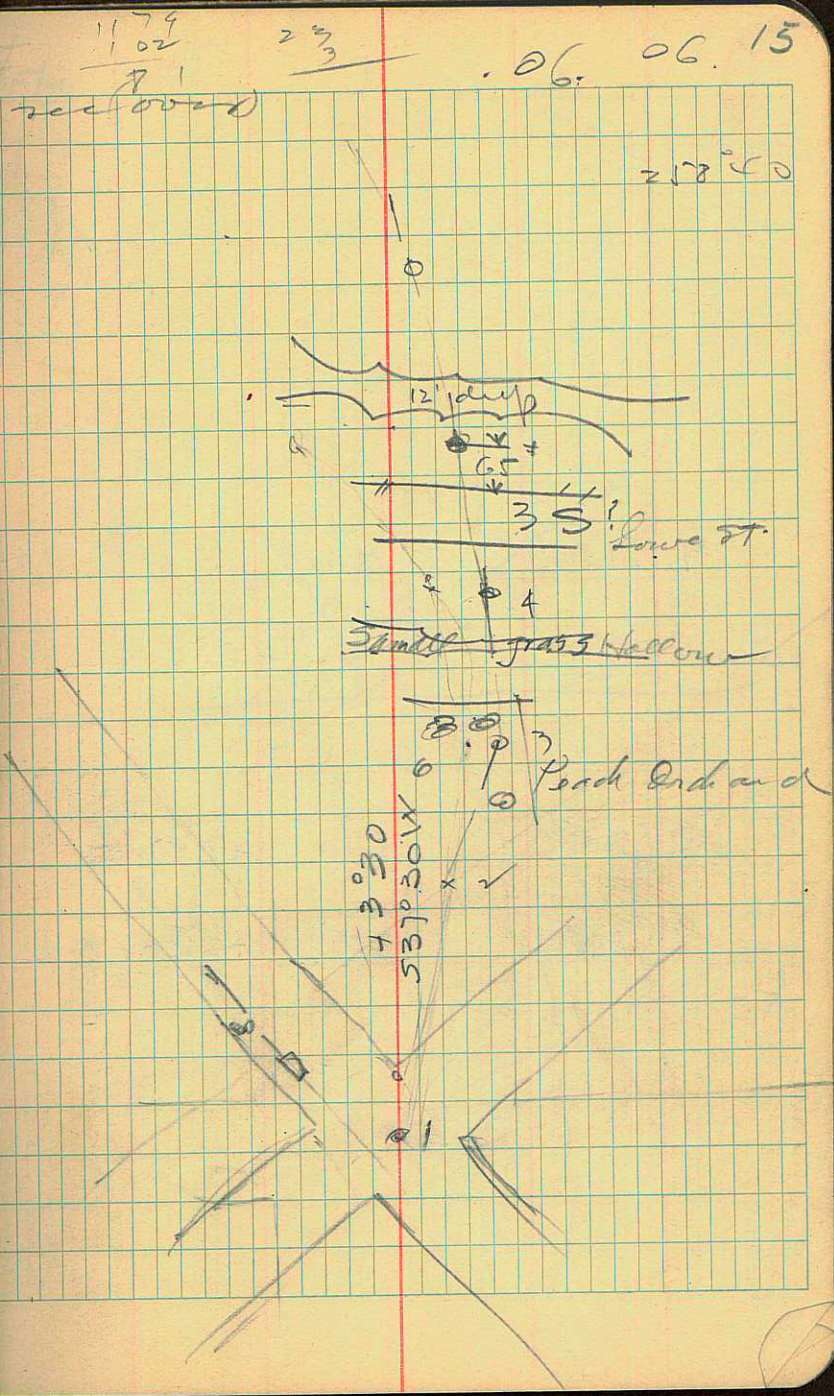
13



2  
5/8  
1/2



#	La Bear	R±	L	C	U
7 <sub>A</sub>	12+81	4.65	5.25	4	8.00
	58°40' W			+3°03'	5.02
6 <sub>A</sub>	10+95	4.85	5.30	4	+3°30' 8
	57°40' W				
5 <sub>A</sub>	59+09	4.4	5.80	4	+3°00' 9.00
	58° W				
4 <sub>A</sub>	45+89	4.75	5.9	4	+3°30' 8
	24°20' W				
3 <sub>A</sub>	33+78	4.80	4	4	+3°30' 5.80
	41°20' W				
2 <sub>A</sub>	21+98	4.90	5	4	+3°30' 6.98
	37°20' W				
1 <sub>A</sub>		5.00			



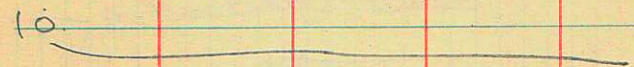
L O ELEV HI

5.25  
2.16 1280  
1500  
5.17

4.3 150  
4.7 100  
5.00 (3.7)

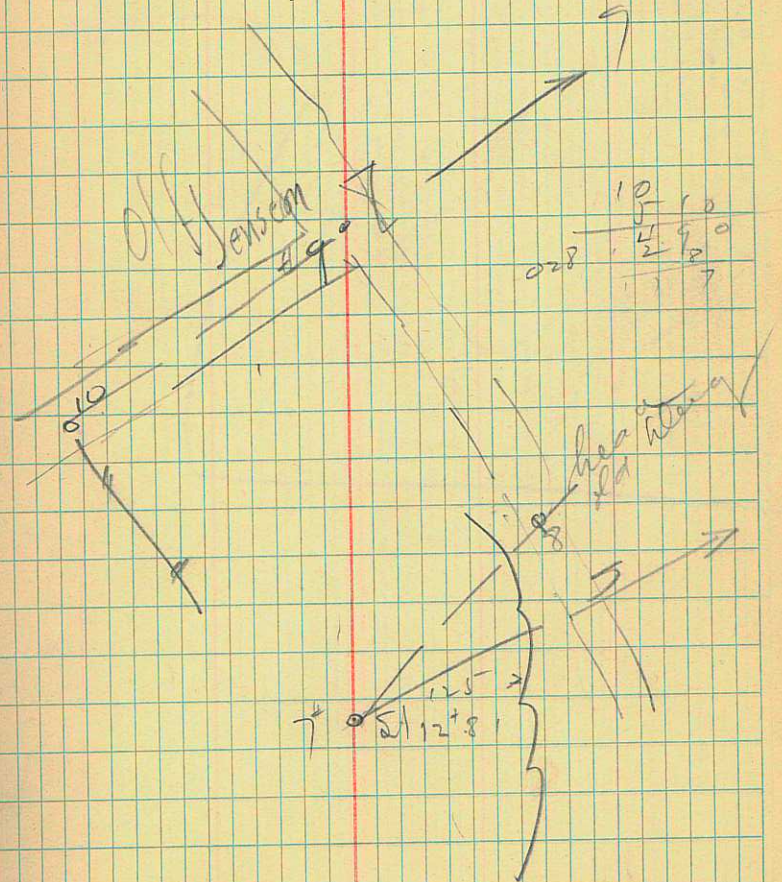
10  
10  
10  
10  
10  
10

9 S130W 2.0 11.5

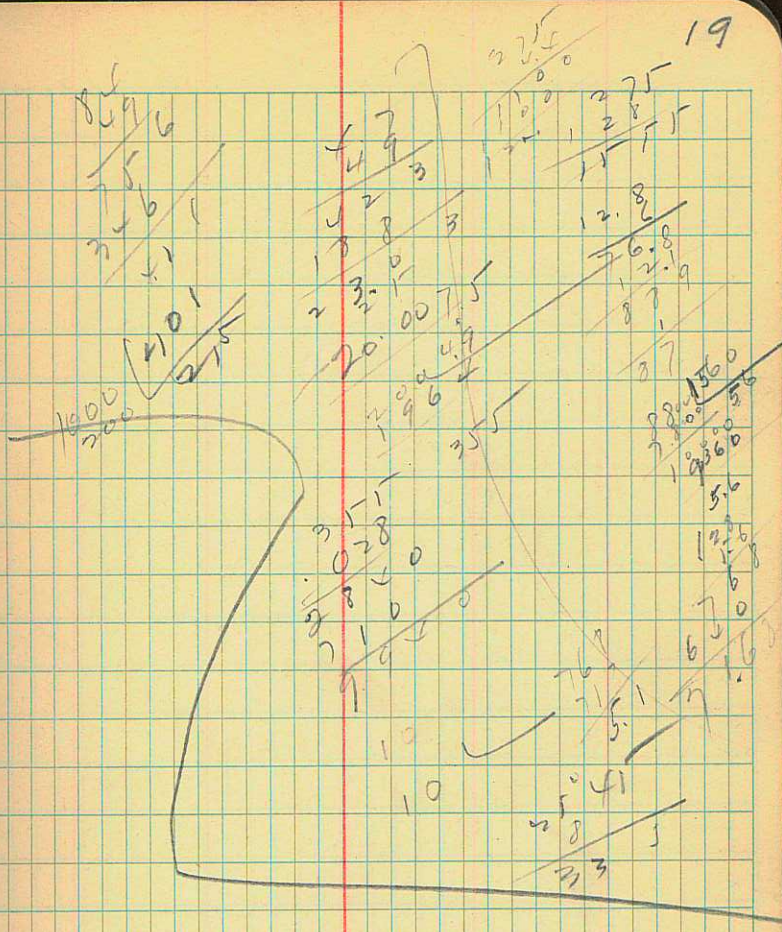


7 S5645E 5.10 +2.47 10.

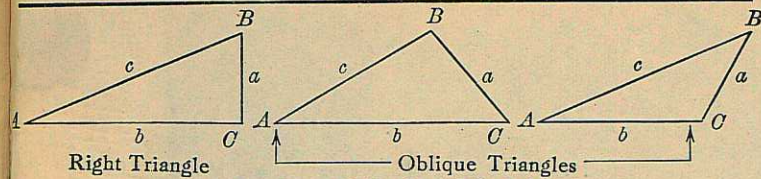
8 S2545E 5.25 +2.30 8.00



#  
7  
6  
5  
4  
3  
2  
1



TRIGONOMETRIC FORMULÆ



Right Triangle

Oblique Triangles

Solution of Right Triangles

For Angle A.  $\sin = \frac{a}{c}$ ,  $\cos = \frac{b}{c}$ ,  $\tan = \frac{a}{b}$ ,  $\cot = \frac{b}{a}$ ,  $\sec = \frac{c}{a}$ ,  $\text{cosec} = \frac{c}{b}$

Given	Required	Formulas
$a, b$	$A, B, c$	$\tan A = \frac{a}{b} = \cot B, c = \sqrt{a^2 + b^2}$
$a, c$	$A, B, b$	$\sin A = \frac{a}{c} = \cos B, b = \sqrt{c^2 - a^2}$
$A, a$	$B, b, c$	$B = 90^\circ - A, b = a \cot A, c = \frac{a}{\sin A}$
$A, b$	$B, a, c$	$B = 90^\circ - A, a = b \tan A, c = \frac{b}{\cos A}$
$A, c$	$B, a, b$	$B = 90^\circ - A, a = c \sin A, b = c \cos A$

Solution of Oblique Triangles

Given	Required	Formulas
$A, B, a$	$b, c, C$	$b = \frac{a \sin B}{\sin A}, C = 180^\circ - (A + B)$
$A, a, b$	$B, c, C$	$\sin B = \frac{b \sin A}{a}, C = 180^\circ - (A + B)$
$a, b, C$	$A, B, c$	$A + B = 180^\circ - C, \tan \frac{1}{2}(A - B) = \frac{a - b}{a + b} \cot \frac{1}{2}C$ $c = \frac{a \sin C}{\sin A}$
$a, b, c$	$A, B, C$	$s = \frac{a + b + c}{2}, \sin \frac{1}{2}A = \sqrt{\frac{(s - b)(s - c)}{bc}}$ $\sin \frac{1}{2}B = \sqrt{\frac{(s - a)(s - c)}{ac}}$
$a, b, c$	Area	$s = \frac{a + b + c}{2}, \text{area} = \sqrt{s(s - a)(s - b)(s - c)}$
$A, b, c$	Area	$\text{area} = \frac{bc \sin A}{2}$
$A, B, C, a$	Area	$\text{area} = \frac{a^2 \sin B \sin C}{2 \sin A}$

REDUCTION TO HORIZONTAL

Horizontal distance = Slope distance  $\times$  cosine of the vertical angle. Thus: slope distance = 319.4 ft. Vert. angle =  $5^\circ 10'$ . From Table,  $\cos 5^\circ 10' = .9959$ . Horizontal distance =  $319.4 \times .9959 = 318.09$  ft. Horizontal distance also = Slope distance times (1 - cosine of vertical angle) + cosine of vertical angle times slope distance. Same figures as in the preceding result is obtained.  $\cos 5^\circ 10' = .9959$ .  $319.4 \times .0041 = 1.31$ .  $319.4 - 1.31 = 318.09$  ft. When the rise is known, the horizontal distance is approximately: the slope distance less the square of the rise divided by twice the slope distance. Thus: rise = 14 ft., slope distance = 302.6 ft. Horizontal distance =  $302.6 - \frac{14 \times 14}{2 \times 302.6} = 302.6 - 0.32 = 302.28$  ft.

